

2010 ANNUAL REPORT



NATIONAL CENTER FOR RESPONSIBLE GAMING

MESSAGE FROM THE CHAIRMAN

In 2010, among the many initiatives instituted by the NCRG, we commissioned a survey of our stakeholders to gauge opinions about the organization. The results were both enlightening and heartening. The survey confirmed the success of our efforts and reinforced our plans for the future.

Among those results, stakeholders were quite favorable about how the NCRG was fulfilling its mission: to fund the highest-quality peer-reviewed research on gambling disorders, translate research findings into practical applications for real-world use and increase awareness and education about gambling disorders and responsible gaming.

As we have previously communicated, in 2010, the NCRG announced a restructuring of its competitive project grants program, making it possible for investigators from various disciplines and at all career levels to apply for three different categories of grants. The survey indicated that stakeholders have great respect for the quality of our peer-reviewed research. A review of the grants awarded in the Revolutionizing Research section of the annual report shows how this innovative approach makes it possible to increase funding opportunities, encourage new investigators to explore gambling disorders and foster multidisciplinary collaboration.

Survey respondents also reported that our annual conference is high on the list of things they find helpful to their jobs. We were very pleased with the 11th annual NCRG Conference on Gambling and Addiction which, brought together 250 stakeholders from around the world and looked at the future of responsible gaming. Conference participants also reviewed scientific developments and cultural changes that are forcing us to redefine the way we study, diagnose and treat gambling disorders and encourage responsible gaming. The conference also continued its successful partnership with Global Gaming Expo (G2E) — the premier gaming industry trade show and conference — to make essential information about gambling disorders available to a wider audience of international stakeholders. We hope that you will be able to attend this year's conference Oct. 2-4 in Las Vegas.

Those surveyed also said that the NCRG's public education activities have made a meaningful impact on the field of research on gambling disorders. In 2010, the NCRG continued its highly successful Road Tour, which is described in more detail in the pages of this report. This fourth annual event visited Cleveland to promote responsible gaming, share new resources and discuss the latest research in the field of gambling disorders.

As has been the case since its founding, the NCRG proved a leader and innovator throughout 2010 in implementing practical applications for research findings and increasing awareness about gambling disorders and responsible gaming. Last year, the NCRG embarked on a plan to create CollegeGambling.org, a first-of-its-kind resource, which launched in March. We also have found our webinar series to be very effective in communicating state-of-the-art research in a very convenient forum.

This year's annual report is just a taste of the NCRG's very active and successful year, and offers greater detail on the progress made in all fields of endeavor. Hopefully you will share my pride in our accomplishments upon reviewing these materials. I look forward to working with our stakeholders to produce even more exciting and fruitful days ahead.

Sincerely,



Glenn C. Christenson
Chairman
National Center for Responsible Gaming



NCRG LEADERSHIP

The National Center for Responsible Gaming's (NCRG) mission is to help individuals and families affected by gambling disorders by supporting the finest peer-reviewed, scientific research into pathological and youth gambling; encourage the application of new research findings to improve prevention, diagnostic, intervention and treatment strategies; and advance public education about gambling disorders and responsible gaming. Founded in 1996 as a 501(c)3 charitable organization, the NCRG is the American Gaming Association's (AGA) affiliated charity.

More than \$22 million has been committed to the NCRG through 2013 to support scientific research into pathological gambling; encourage the practical application of new research findings; and develop science-based responsible gaming education and outreach programs.

The NCRG is overseen by a board of directors that serves as the practical, hands-on management group for the organization, focusing on education and outreach program creation and implementation. 2010 board members include:

OFFICERS

CHAIRMAN

Glenn C. Christenson

Managing Director
Velstand Investments, LLC

PRESIDENT

William S. Boyd

Executive Chairman
Boyd Gaming Corporation

SECRETARY AND TREASURER

Judy L. Patterson

Senior Vice President and Executive Director
American Gaming Association

BOARD OF DIRECTORS

Sue Cox

Founding Executive Director
Texas Council on Problem and Compulsive
Gambling

Alan Feldman

Senior Vice President of Public Affairs
MGM Resorts International

Kevin Mullally

General Counsel and Director of
Government Affairs
Gaming Laboratories International, Inc.

Phil Satre

Chairman
International Game Technology

Jennifer Shatley

Vice President, Responsible Gaming
Policies and Compliance
Caesars Entertainment Corporation

Bruce A. Shear

President and CEO
Pioneer Behavioral Health

CONTRIBUTORS

Since its inception, more than \$22 million has been committed to the NCRG through generous support from various financial donors, including gaming companies, suppliers and vendors, NCRG board members, gaming employees, related organizations and individuals. These contributions allow the NCRG to further its mission to support research, encourage the practical application of new research findings to improve prevention and treatment strategies, and advance public education and awareness about responsible gaming.

The following is a list of contributors who supported the NCRG in 2010.

Gold Level

Caesars Entertainment Corporation*
Gary Loveman,
President, CEO & Chairman

Silver Level

International Gaming Technology*
Patti S. Hart,
President & CEO

Bronze Level

Ameristar Casinos, Inc.*
Gordon R. Kanofsky,
CEO & Vice Chairman

Bally Technologies*
Richard Haddrill,
President, CEO & Director

Boyd Gaming Corporation*
Keith Smith,
President & CEO

Churchill Downs Incorporated
Robert L. Evans,
President & CEO

Glenn Christenson

Isle of Capri Casinos, Inc.*
Virginia McDowell,
President & CEO

MGM Resorts International*
James J. Murren,
Chairman & CEO

Penn National Gaming*
Timothy J. Wilmott,
President & COO

Station Casinos, Inc.*
Frank J. Fertitta, III,
Chairman & CEO

WMS Gaming, Inc.*
Brian R. Gamache,
President & CEO

Wynn Resorts, Limited*
Stephen A. Wynn,
Chairman of the Board & CEO

SPECIAL DONATIONS

\$100,000

JCM Global

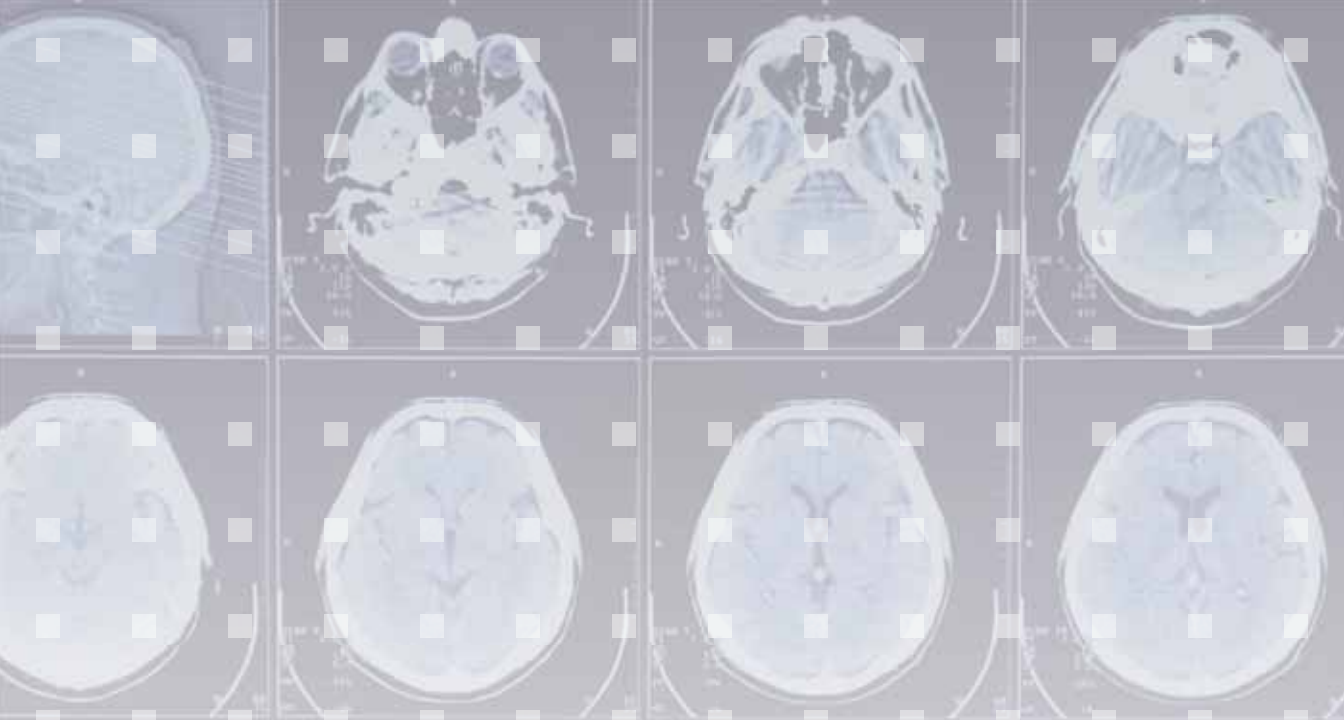
\$72,000

Global Gaming Expo (G2E)

\$10,000

Pioneer Behavioral Health

*Indicates the company's contribution is part of a multiyear pledge.
(For a list of contributors prior to 2010, visit www.ncrg.org.)



REVOLUTIONIZING RESEARCH



The NCRG is the leading private source of funding for science-based research and information on gambling and health in the United States. In the 14 years since its inception, the NCRG has supported the highest-quality research projects in the field and has fueled the most dramatic increase in scientific investigations of gambling over the past century.

When the NCRG was founded in 1996, it revolutionized the field of research on gambling disorders by providing the first significant private source of funding for research in this field, and it continues to promote its progress. In 2010, the NCRG announced a restructuring of its competitive project grants program.

With the restructuring, investigators from various disciplines and at all career levels have the opportunity to apply for three different categories of grants: Exploration Grants (up to \$5,000 for one year), Seed Grants (up to \$25,000 for one year) and Large Grants (up to \$75,000 per year for two years). This innovative approach allows the NCRG to offer more funding opportunities than in previous years, increase the number of researchers working in the field, encourage new investigators to explore gambling disorders and foster multidisciplinary collaboration.

Scientific Advisory Board

Composed of leading independent scientists with expertise in addiction and related topics, the Scientific Advisory Board plays a vital role by ensuring that the NCRG follows rigorous standards in awarding grants for only the highest-quality research proposals. The board's main responsibilities are to monitor the progress of the NCRG Centers of Excellence in Gambling Research and to evaluate the conduct of the project grants program, including the peer-review process. Members also advise on the development of funding initiatives and educational activities.

CHAIRWOMAN

Linda B. Cottler, Ph.D., M.P.H.
Professor of Epidemiology in Psychiatry
Washington University School of Medicine

BOARD MEMBERS

Jeff Derevensky, Ph.D.
Professor of School/Applied Child
Psychology
Professor of Psychiatry
Co-Director, International Centre for
Youth Gambling Problems and High-
Risk Behaviors
McGill University

William Eadington, Ph.D.
Professor of Economics
Philip G. Satre Chair in
Gambling Studies
Director, Institute for the Study of
Gambling and Commercial Gaming
University of Nevada, Reno

Richard I. Evans, Ph.D.
Distinguished University Professor
of Psychology
University of Houston

**Eileen Luna Firebaugh, J.D.,
M.P.A.**
Associate Professor of American
Indian Studies
University of Arizona

Richard McGowan, S.J., D.B.A.
Associate Professor of Operations,
Information & Strategic Management
Boston College

Lisa M. Najavits, Ph.D.
Professor of Psychiatry
Boston University School of Medicine
Lecturer
Harvard Medical School

Charles Wellford, Ph.D.
Professor of Criminology &
Criminal Justice
University of Maryland

Ken C. Winters, Ph.D.
Professor of Psychiatry
Director, Center for Adolescent
Substance Abuse Research
University of Minnesota

Harold Wynne, Ph.D.
President
Wynne Resources, Ltd.

NCRG Centers of Excellence in Gambling Research

In 2009, the University of Minnesota and Yale University were selected as the first NCRG Centers of Excellence in Gambling Research. Below are descriptions of the long-term, multidisciplinary research and education programs each Center of Excellence is undertaking.

University of Minnesota: Susceptibility Model for Pathological Gambling

The NCRG Center of Excellence at the University of Minnesota, led by principal investigator Jon E. Grant, J.D., M.D., M.P.H., is focused on developing and validating a model that will allow for the early detection of susceptible youth and, with early treatment interventions, will prove that progression to pathological gambling, and perhaps other disorders of impulse control, can be prevented.

At this stage of the grant, the center has enrolled 347 young adults in order to assess a range of impulsive behaviors using neuropsychological, cognitive and neuroeconomic tasks. To investigate the predictive power of the impulsivity models, the sample of young adults will be followed longitudinally during the final years of this grant to examine the development of problem/pathological gambling and other impulsive behaviors. The researchers have already seen 22 percent of the sample for one-year follow-up visits wherein cognitive tasks and full psychiatric and behavioral evaluations are again conducted. In order to develop and pilot test cognitive behavioral interventions that will directly target specific cognitive elements that predict later gambling and other impulsive problems, 106 of the most impulsive subjects have been selected to receive psychoeducation about impulsivity and a working memory task as a brief intervention.

In 2010, Dr. Grant and colleagues presented papers on this research at the American College of Neuropsychopharmacology 49th Annual Meeting and the NCRG Conference on Gambling and Addiction. They have published four papers in peer-reviewed journals and have six articles recently accepted for publication (see list on page 10).

Yale University: The Yale Gambling CORE (Center of Research Excellence)

The main research component of The Yale Center of Research Excellence (CORE) involves the disciplines of treatment development, brain imaging, molecular genetics and behavioral/neurocognitive assessment. It is focused on investigating the factors associated with outcome in pathological gambling treatment. The Yale CORE is led by Marc Potenza, M.D., Ph.D., professor of psychiatry, child study and neurobiology at Yale School of Medicine.

At this stage in the grant, the center has made progress on several fronts. The researchers continue to recruit subjects into treatment trials and have been obtaining genetic and neurocognitive measures on research participants as well as data from brain scanning. The objective is to enhance understanding of the relationship between clinically relevant aspects of pathological gambling and biological mechanisms (brain imaging and genetics) by adding to existing samples. They are also working on a similar strategy to further investigate adolescent gambling and risk-taking in a community sample of adolescents.

In 2010, Dr. Potenza and colleagues presented papers on this research at the NCRG Conference on Gambling and Addiction, the European College of Neuropsychopharmacology, Italy's Second Annual Neuroscience of Addiction Conference and the Alberta Gambling Research Conference. They published five papers in peer-reviewed journals in 2010 (see list on page 10) and have six articles recently accepted for publication.

2010 Peer Review Panel Members

The NCRG recruits distinguished researchers in the addictions field to evaluate proposals. The following individuals served on peer review panels in 2010.

Lyndsay Ammon Avalos, Ph.D., M.P.H.

Associate Scientist
Alcohol Research Group

Robert Booth, Ph.D.

Professor of Psychiatry
University of Colorado Health Sciences

Brian Borsari, Ph.D.

Associate Professor
Center for Alcohol and Addiction Studies
Brown University

Michael Bozarth, Ph.D.

Associate Professor of Psychology
State University of New York-Buffalo

R. Andrew Chambers, M.D.

Associate Professor of Psychiatry and
Fellow in Addiction Psychiatry
Indiana University School of Medicine

Tammy A. Chung, Ph.D.

Associate Professor of Psychiatry
Western Psychiatric Institute and Clinic
University of Pittsburgh

Linda B. Cottler, Ph.D., M.P.H.

Professor of Epidemiology in Psychiatry
Washington University School of
Medicine

William Eadington, Ph.D.

Professor of Economics
Philip G. Satre Chair in Gambling Studies
Director, Institute for the Study of
Gambling and Commercial Gaming
University of Nevada, Reno

Debra M. Furr-Holden, Ph.D.

Assistant Professor
Johns Hopkins University

Adam Goodie, Ph.D.

Director, Georgia Decision Lab
Associate Professor of Psychology
University of Georgia

Scott Huettel Ph.D.

Associate Professor of Psychology and
Neuroscience
Co-director, Center for Neuroeconomic
Studies
Duke University

Yifrah Kaminer, M.D., M.B.A.

Professor of Psychiatry and Pediatrics
University of Connecticut Health Center

Steven LaRowe, Ph.D.

Research Assistant Professor
Center for Drug and Alcohol Programs
Medical College of South Carolina

Yijun Liu Ph.D.

Chief, Division on Global Health
University of Florida

Gregory J. Madden, Ph.D.

Associate Professor of Psychology
Utah State University

Sherry McKee, Ph.D.

Associate Professor of Psychiatry
Yale University School of Medicine

Gloria M. Miele, Ph.D.

Program Director
Women's Health Project Treatment
and Research Center
Columbia University

Craig Nagoshi, Ph.D.

Associate Professor of Psychology
Arizona State University

Clayton Neighbors, Ph.D.

Professor of Psychology
University of Houston

Nancy M. Petry, Ph.D.

Professor of Psychiatry
University of Connecticut School
of Medicine

Charan Ranganath, Ph.D.

Associate Professor
Center for Neuroscience & Department
of Psychology
University of California, Davis

Steven Schinke, Ph.D.

D'Elbert and Selma Keenan Professor
of Social Work
Columbia University

Gregory Smith, Ph.D.

Professor of Psychology
University of Kentucky

Kate Spilde, Ph.D., M.B.A.

Chair, Sycuan Institute and
Associate Professor
San Diego State University

David Takeuchi, Ph.D.

Professor
Department of Sociology & School
of Social Work
University of Washington, Seattle

Stuart Usdan Ph.D.

Associate Professor
University of Alabama

John W. Welte Ph.D.

Senior Research Scientist V
Research Institute on Addictions
University of Buffalo

Thomas Widiger, Ph.D.

Professor of Psychology
University of Kentucky

Catharine Winstanley, Ph.D.

Assistant Professor
Lab of Molecular and Behavioral
Neuroscience
University of British Columbia

Ken C. Winters, Ph.D.

Professor of Psychiatry
Director, Center for Adolescent
Substance Abuse Research
University of Minnesota

W. Gill Woodall Ph.D.

Professor of Communication and
Research Scientist
University of New Mexico

Harold Wynne, Ph.D.

President
Wynne Resources, Ltd.

David Zald, Ph.D.

Associate Professor of Psychology
and Psychiatry
Vanderbilt University

Project Grants Program

Under the restructured grants program, in 2010, the NCRG awarded \$380,466 to support five new research projects. These grants encourage high-quality scientific research on gambling disorders and help increase the understanding of the drivers behind not only gambling disorders, but all addictive disorders.

In 2010, grants were awarded for the following research projects:

Exploration Grant

Principal Investigator: Yijun Liu, Ph.D.
University of Florida

Award: \$5,400

Dr. Lui will develop a virtual Internet gambling website to be used as a simulation in a laboratory experiment involving 12 subjects who meet the criteria for pathological gambling and 12 control group members. The goal is to understand the neural pathways involved in excessive gambling and discern what is unique about the online gambling experience for people with gambling-related problems.

Seed Grants

Principal Investigator: Scott Huettel, Ph.D.
Duke University

Award: \$34,500

Dr. Huettel will test the hypothesis that whether someone makes a risky or safe choice depends not simply on preferences, but on the strategies used to acquire and integrate new information. The information-acquisition process will be investigated in real time using high-speed, high resolution eye-tracking technology and gambling tasks. The project will further evaluate how factors that contribute to risk-seeking choices alter how people process new information about risks and rewards.

Principal Investigator: Mark R. Dixon, Ph.D.
Southern Illinois State University

Award: \$34,500

Using a computerized slot-machine task, Dr. Dixon will examine the brain activity of disordered gamblers through an fMRI scanner before and after Acceptance and Commitment Therapy (ACT). The investigators will compare the brain scans of the therapy group with the control group to look for evidence of neurobiological changes as a result of ACT.

Large Grants

Principal Investigator: Matthew P. Martens, Ph.D.

University of Missouri – Columbia

Award: \$172,500

Dr. Martens will test a personalized feedback-only intervention that will provide “at-risk” college students with information about their behavior. This project will determine if college students participating in the personalized feedback condition will report less gambling, fewer dollars gambled and less problem gambling at follow-up than students in both education/advice and assessment-only control conditions.

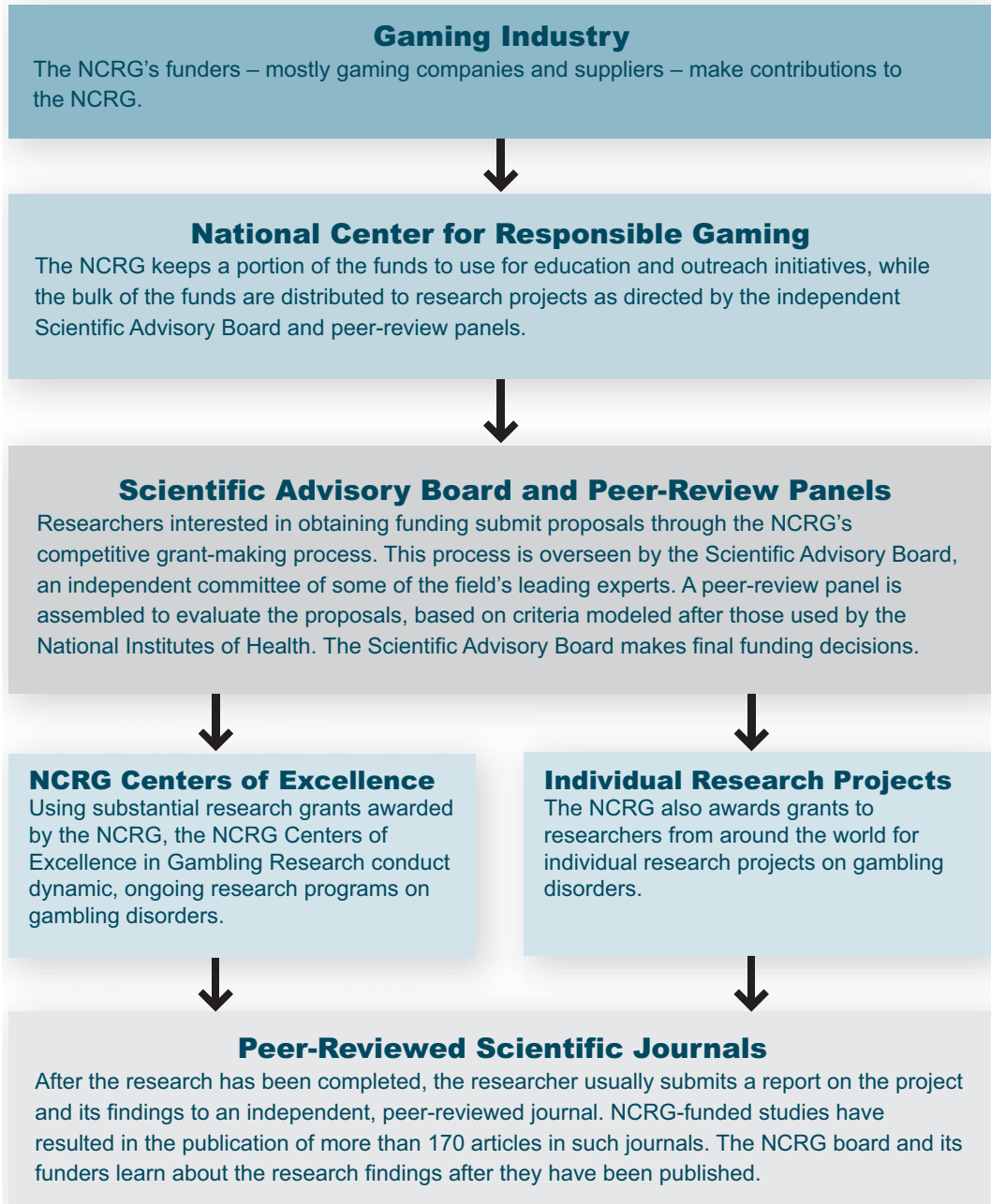
Principal Investigator: John Nyman, Ph.D.
University of Minnesota

Award: \$136,449

Dr. Nyman will study the differentiating factors between people who are recreational gamblers with no gambling-related problems and people who are pathological gamblers. The study will also determine when a recreational gambler becomes a problem gambler and test the theory that, for recreational gamblers, gambling is an economic activity.

Ensuring the Integrity of NCRG-Funded Research

Since its founding in 1996, the NCRG has mandated stringent firewalls in a multistep process to separate the gaming industry's contributions from the research it funds. This process, detailed in the diagram below, ensures the NCRG and its funders have no influence over which research projects receive funding, nor over the findings of the research that is funded. In this way, the NCRG serves as a model for other industries and institutions interested in learning how to safeguard the integrity of the research they fund.



2010 Publications of NCRG-Funded Research

Publishing research findings in a peer-reviewed scientific journal is how researchers share their work with colleagues and the public, and subject their methodology and analysis to the judgment of the scientific community. NCRG-supported research has consistently been published in the highest-impact journals with the most rigorous standards. The following NCRG-funded research studies were published in 2010.

- Brewer, J. A., Potenza, M. N., & Desai, R. A. (2010). Differential associations between problem and pathological gambling and psychiatric disorders in individuals with and without alcohol abuse or dependence. *CNS Spectrums*, *15*(1), 33-44.
- Desai, R.A., Krishnan-Sarin, S., Cavallo, D., & Potenza, M.N. (2010). Video-Gaming among high school students: Health correlates, gender differences, and problematic gaming. *Pediatrics*, *126*, e1414-e1424.
- Flagel, S.B, Robinson, T.E., Clark J.J., Clinton, S.M., Watson, S.J., Seeman, P. Phillips, P.E., & Akil, H. (2010). An animal model of genetic vulnerability to behavioral disinhibition and responsiveness to reward-related cues: Implications for addiction. *Neuropsychopharmacology*, *35*(2), 388-400.
- Gebauer, L., LaBrie, R. A., and Shaffer, H. J. (2010). A brief bio-social screen for detecting current gambling disorders among gamblers in the general household population. *Canadian Journal of Psychiatry*, *55*(2), 82-90.
- Grant, J.E., Chamberlain, S.R., Odlaug, B.L., Potenza, M.N., & Kim, S.W. (2010). Memantine shows promise in reducing gambling severity and cognitive inflexibility in pathological gambling: A pilot study. *Psychopharmacology*, *212*, 603-612.
- Grant, J.E., & Potenza, M.N. (2010). Pharmacological treatment of adolescent pathological gambling. *International Journal of Adolescent Medicine and Health*, *22*(1), 129-138.
- Grant, J.E., Potenza, M.N., Weinstein, A., & Gorelick, D. (2010). Introduction to behavioral addictions. *American Journal of Drug and Alcohol Abuse*, *36*(5), 233-41.
- King, S.M., Abrams, K., & Wilkinson, T. (2010). Personality, gender, and family history in the prediction of college gambling. *Journal of Gambling Studies*, *26*(3), 347-359.
- LaPlante, D. A., Gray, H. M., Bosworth, L., & Shaffer, H. J. (2010). Thirty years of lottery public health research: Methodological strategies and trends. *Journal of Gambling Studies*, *26*(2), 301-329.
- Nelson, S.E., Kleschinsky, J.H., LaBrie, R.A., Kaplan, S., & Shaffer, H.J. (2010). One decade of self exclusion: Missouri casino self-excluders four to ten years after enrollment. *Journal of Gambling Studies*, *26*(1), 129-144.
- Shaffer, H.J., Peller, A.J., LaPlante, D.A., & Nelson, S.E., & LaBrie, R.A. (2010). Toward a paradigm shift in Internet gambling research: From opinion and self-report to actual behavior. *Addiction Research and Theory*, *18*(3), 27-283.
- Zeeb, F. D., Floresco, S. B., & Winstanley, C. A. (2010). Contributions of the orbitofrontal cortex to impulsive choice: interactions with basal levels of impulsivity, dopamine signalling, and reward-related cues. *Psychopharmacology (Berl)*, *211*(1), 87-98.



PUBLIC EDUCATION AND OUTREACH

Annual Conference

Redefining Diagnosis, Treatment, Research and Responsible Gaming for the 21st Century

The NCRG — in partnership with the NCRG Centers for Excellence in Gambling Research — hosted the 11th annual NCRG Conference on Gambling and Addiction at the Mandalay Bay Resort & Casino and the Las Vegas Convention Center from Nov. 14-16.

The 2010 conference brought together 250 stakeholders from around the world and looked ahead at how new research is redefining the way gambling disorders are diagnosed, treated and studied to prevent gambling disorders, and what effects these changes have for responsible gaming programs.

Conference sessions examined a variety of compelling issues and topics, including the proposed changes to the diagnosis of pathological gambling in the *DSM-V* and their implications for treatment providers, researchers and policymakers.

Other sessions explored new approaches for studying and treating minority populations, using Motivational Interviewing for treatment of disordered gambling, the implications of new gambling technology, fresh ideas for implementing responsible gaming policies in new gaming jurisdictions and much more.

The conference also covered a broad range of practical applications for research, such as how the latest scientific research is being translated into more effective diagnostic and treatment

methods and responsible gaming programs, and what impact the latest research is having on public policy, including regulations governing the industry.

In addition, the NCRG once again partnered with Global Gaming Expo (G2E), the gaming industry's premier



Researchers, clinicians and gaming industry representatives came together at the 2010 NCRG Conference on Gambling and Addiction.

trade show and conference event, to host the last day of the conference at G2E in conjunction with G2E's corporate social responsibility conference track. This partnership with G2E encourages a greater number of international attendees to come to the NCRG conference, fostering better dialogue and enhanced networking opportunities across all disciplines represented.

Last year, "NCRG at G2E" sessions highlighted the effectiveness of self-exclusion programs, responsible gaming in the online gambling arena and how to make the most of responsible gaming and problem gambling awareness weeks.

The 2010 NCRG conference was generously supported by the following sponsors:

Gold: International Game Technology, San Manuel Band of Mission Indians;

Silver: Isle of Capri Casinos Inc., Konami, Potawatomi Bingo/Casino, WMS Gaming Inc.;

Bronze: Caesars Entertainment Corporation, Penn National Gaming, Inc.

NCRG Conference on Gambling and Addiction Advisory Board

The following individuals generously donated their time and expertise to help develop the program for the 2010 conference:

Glenn Christenson*

Managing Director, Velstand Investments, Inc., and
Chairman, National Center for Responsible Gaming

Peter Collins

Professor, Public Policy Studies, and Director, Centre for the
Study of Gambling, University of Salford; and Executive
Director, South African National Responsible Gambling
Programme

Linda B. Cottler, Ph.D., M.P.H.†

Professor of Epidemiology in Psychiatry, Washington University
School of Medicine in St. Louis; and Chair, Scientific
Advisory Board, National Center for Responsible Gaming

Jeff Derevensky, Ph.D.†

Professor of School/Applied Child Psychology, Professor of
Psychiatry, and Co-Director, International Centre for Youth
Gambling Problems and High-Risk Behaviors, McGill
University

Alan Feldman*

Senior Vice President of Public Affairs, MGM Resorts
International

Jon E. Grant, M.D., M.P.H., J.D.

Professor of Psychiatry and Co-director of the Impulse Control
Clinic, University of Minnesota Medical School

Dean Hestermann

Corporate Director of Public Affairs, Caesars Entertainment
Corporation

Nanette L. Horner

Chief Compliance Officer, Empire Resorts, Inc.

Connie Jones

Director of Responsible Gaming, International Game
Technology (IGT)

Eileen Luna-Firebaugh, J.D., M.P.A.†

Associate Professor, American Indian Studies Program,
University of Arizona

Reece Middleton

Executive Director, Louisiana Association on Compulsive
Gambling

Judy Patterson*

Senior Vice President and Executive Director, American
Gaming Association

Marc N. Potenza, M.D., Ph.D.

Professor of Psychiatry and Founding Director of the Problem
Gambling Clinic, Yale University School of Medicine

Christine Reilly

Senior Research Director, National Center for
Responsible Gaming

Kate Spilde, Ph.D.

Chair, Sycuan Institute on Tribal Gaming, and Associate
Professor, School of Hospitality and Tourism Management,
San Diego State University

Mark Vander Linden

Coordinator, Iowa Gambling Treatment Program

Harold Wynne†

President, Wynne Resources, Ltd.

*Member or Officer, Board of Directors, National Center for Responsible Gaming

†Member, Scientific Advisory Board, National Center for Responsible Gaming

Scientific Achievement and Poster Awards

The NCRG established the Scientific Achievement Awards in 2002 to honor those individuals who have made exceptional scientific contributions to the field of gambling research.

The 2010 Scientific Achievement Award was presented to David C. Hodgins, Ph.D., professor of psychology in the department of psychology at the University of Calgary and institute node coordinator for the University of Calgary, Alberta Gaming Research Institute, in recognition of his significant contributions to the field of research on gambling disorders.

Hodgins's work focuses on three interrelated lines of cutting-edge research in the area of gambling disorders — natural history research, the design and evaluation of brief interventions and the study of the precipitants of relapse to problem gambling. His work on natural recovery is widely cited and provides insight into the process of untreated remissions from gambling problems. His research on brief treatment interventions is recognized around the world and is listed as an evidence-based treatment by the U.S. Substance Abuse Mental Health Services Administration. Hodgins's third area of gambling research focuses on relapse to gambling problems, in which he developed and evaluated relapse prevention materials for clinical use. A 1999 grant from the NCRG supported his research on relapse.

Hodgins has published more than 100 articles in prestigious scientific journals, and has authored and co-authored a number of books and book chapters. These include *Motivational Interviewing in the Treatment of Problem and Pathological Gambling* (Guilford, 2008), *Research and Measurement Issues in Gambling Studies* (Elsevier, 2007), and *Promoting Self-change from Problem Substance Use: Practical Implications for Policy, Prevention and Treatment* (Kluwer, 2001).

An independent committee selected the award-winner from nominations submitted by the public. Members of the 2010 committee include: Jon E. Grant, J.D., M.D., M.P.H., professor of psychiatry, University of Minnesota; Rina Gupta, Ph.D., assistant professor in school/applied child psychology, McGill University; Robert Ladouceur, Ph.D., professor emeritus of psychology, Laval University; Craig Nagoshi, Ph.D., associate professor of psychology, Arizona State University; and Harold Wynne, Ph.D., president, Wynne Resources.

The 2010 Outstanding Poster Award at the NCRG conference was presented to a team of investigators from the University of Alberta, Canada for their paper: "Problem Gambling and prescription drug misuse among adults." This research by Cynthia Currie, David Schopflocher and Cam Wild extends current knowledge about the relationship between problem gambling and prescription drug misuse, and provides epidemiological information that can be used to compare and complement future research in this area. The poster was selected from among 34 entries in 2010.



David Hodgins, Ph.D., received the 2010 Scientific Achievement Award at the NCRG Conference on Gambling and Addiction.

Webinar Series

In 2010, the NCRG teamed with the G2E Online Education Center to sponsor two free webinar sessions that helped participants better understand critical issues related to gambling disorders and responsible gaming. A June session drew 123 participants and an August session 131 participants.

The first webinar was titled “Co-Occurring Disorders: How Research is Informing the Identification and Treatment of Pathological Gambling,” and featured Marc Potenza, M.D., Ph.D., of Yale University. He discussed the influence new research is having on the treatment of pathological gamblers and touched on how research on co-occurring disorders has impacted treatment planning for clients with gambling problems.

The second webinar, “Regulating Interventions for Disordered Gambling: What New Research Says about the Safety, Effectiveness and Logistics of Self-Exclusion Programs,” was led by Robert Ladouceur, Ph.D., C.A.S., professor of psychology, Laval University, Quebec, and Kevin Mullally, J.D., general counsel and director of government affairs, Gaming Laboratories International. Dr. Ladouceur discussed his research evaluating the effectiveness of self-exclusion programs, including an experiment with a more therapeutic rather than punitive approach to self-exclusion designed to provide support and treatment. Mullally provided information on the current international regulatory environment and reflected on the growth of self-exclusion worldwide.

NCRG Road Tour

In July 2010, the NCRG embarked on its fourth annual Road Tour, this time visiting Cleveland — one of Ohio’s new casino jurisdictions — where representatives met with treatment providers, policymakers, researchers and community leaders.

The Road Tour included a workshop for treatment providers, “Treating Disordered Gambling: Common Practices and Challenges,” jointly sponsored by the NCRG, the Alcohol, Drug Addiction



Left: A record crowd of Cleveland-area treatment providers gather during the NCRG road tour. Right: Jon Grant, J.D., M.D., M.P.H., principal investigator at the Center for Excellence in Gambling Research at the University of Minnesota, educates attendees about the work of the NCRG and some of the latest advancements in the treatment of gambling disorders.

PUBLIC EDUCATION AND OUTREACH *continued*

and Mental Health Services Board of Cuyahoga County and the Center for Community Solutions. The workshop drew more than 100 local clinicians and was the most widely attended event since the Road Tour's inception.

As part of the Road Tour activities, the prestigious City Club of Cleveland hosted a forum at which NCRG Board Member Phil Satre discussed the latest developments in the field of gambling research and offered insights on implementing robust responsible gaming programs in Ohio. Satre emphasized the importance of taking a public health approach to addressing gambling disorders that requires looking at how gambling effects the population at-large, and reviewed the social, cultural and economic factors that influence disordered gambling. This presentation was broadcast to more than 160 radio stations in 38 states.

The Road Tour agenda also included a dinner with Cleveland community leaders during which NCRG representatives encouraged attendees to play a role in creating policies and programs that promote responsible gaming. The NCRG also organized one-on-one meetings with representatives from various important community stakeholder groups, including the Cleveland Clinic, the Brecksville Gambling Treatment Program and Cleveland State University.

Development of CollegeGambling.org

As part of its ongoing efforts to develop tools to help higher education institutions address gambling disorders and responsible gaming on campus, the NCRG began the development of CollegeGambling.org.

CollegeGambling.org Advisory Committee

CHAIR

Patricia Ketcham, Ph.D., CHES

Associate Director of Health Promotion, Student Health Services
Oregon State University
Member, Task Force on College Gambling Policies

BOARD MEMBERS

Keith J. Anderson, Ph.D.

Staff Psychologist
Rensselaer Polytechnic Institute
Chair, American College Health Association's Mental Health
Best Practices Task Force

Carlos Blanco, Ph.D.

Professor of Clinical Psychiatry
Columbia University

William DeJong, Ph.D.

Professor, Department of Community Health Services
Boston University School of Public Health
Executive Director, Research and Analysis, Outside The
Classroom, Inc. (OTC)

Jeff Derevensky, Ph.D.

Professor, School/Applied Child Psychology
Professor, Psychiatry
Co-Director, International Centre for Youth Gambling Problems
and High-Risk Behaviors
McGill University

Mary Anne Nagy, MBA

Vice President for Student Services
Monmouth University
Co-chair, Alcohol and Other Drugs National Knowledge
Community, NASPA

Ryan Travia, M.Ed.

Director, Office of Alcohol & Other Drug Services, Department
of Behavioral Health & Academic Counseling
Harvard University
Member, Task Force on College Gambling Policies



The first site of its kind, CollegeGambling.org is a comprehensive resource to help current and prospective students, campus administrators, campus health professionals and parents address gambling and gambling-related harms on campus. The site will be a valuable resource to those interested in learning more about college gambling and will provide information on how they can get involved on campus.

CollegeGambling.org brings together the latest research and best practices in responsible gaming and the field of addiction awareness and prevention to provide a substantive and versatile resource that will help schools and their students address this important issue in the way best suited to each school.

CollegeGambling.org builds on the recommendations of the Task Force on College Gambling Policies, which provide schools with a roadmap for reducing gambling among students and enabling those who are struggling with addiction to participate more fully in college life. Visit www.ncrg.org to view the Task Force's "Call to Action" report.

The development of CollegeGambling.org has been guided by an advisory committee of leading scientists, clinicians and student life experts. The NCRG has relied on the Advisory Committee to help ensure the materials created for the site are firmly grounded in the highest-quality research on these issues and will be effective for the intended audiences.

Social Media

In 2010, the NCRG launched Gambling Disorders 360°, a blog that explores the latest news and research related to gambling disorders and responsible gaming. Hosted on the NCRG's website, the blog's homepage has received nearly 3,000 views from 1,800 unique visitors and enlisted 80 subscribers. Since it was established, more than 70 blog entries have been posted.

The NCRG also expanded its presence on both Facebook and SlideShare in 2010. The NCRG's Facebook fan page keeps interested parties updated on its activities and allows the NCRG to market its resources more widely, while the SlideShare page permits users to download research presentations that can be integrated into their own education efforts. SlideShare includes valuable information presented at the 2010 NCRG Conference on Gambling and Addiction as well as speeches and testimony by experts in the field before various government bodies.

Presentations at Other Conferences

In 2010, as part of its outreach efforts, the NCRG pursued speaking opportunities for the organization's leadership and for distinguished researchers in the field, many affiliated with NCRG. NCRG representatives also spoke at the Midwest Conference on Problem Gambling and Substance Abuse, the IAGA/IAGR International Conference and the National Indian Gaming Association Annual Trade Show. Further, the NCRG had a presence at the following events in 2010: Global Gaming Expo (Las Vegas, Nev.), G2E Asia (Macau) and Indian Gaming 2010 (Phoenix, Ariz.).

Publications

The NCRG produces publications that promote responsible gaming and offer the latest news and information on gambling research and gaming issues.



Among these is *Increasing the Odds: A Series Dedicated to Understanding Gambling Disorders*, which brings the most important research on gambling disorders into the hands of a broad audience. This monograph provides researchers, clinicians, regulators, policymakers and industry leaders with concise, easy-to-understand summaries of important peer-reviewed research on gambling disorders, and looks at the implications for future research and prevention efforts. To date, five volumes have been published, with the most recent in Oct. 2010 titled "Evaluating Self-Exclusion as an Intervention for Disordered Gambling."

The publication included research summaries from Helen Suurvali, B.A., on what motivates gamblers to seek help and change their behavior; Richard A. LaBrie, Ed.D., on how self-exclusion programs can inform public health strategies; Sarah E. Nelson, Ph.D., on the role of the Missouri Voluntary Exclusion Program in changing participants' gambling behavior; and Robert Ladouceur, Ph.D., on early benefits to gamblers through self-exclusion and testing improvements in a self-exclusion program. The publication also features commentary from Kevin Mullally, general counsel and director of government affairs at Gaming Laboratories International and the author of the first state self-exclusion program implemented in the United States, as well as an appendix outlining self-exclusion programs in the United States and in select international jurisdictions.

Responsible Gaming Quarterly (RGQ), which was first published in 2001, has become one of the most respected international resources for news and analysis related to gambling disorders and responsible gaming. Published in partnership with the American Gaming Association (AGA), *RGQ* has nearly 2,000 subscribers, including gaming industry representatives, treatment providers, academics, regulators, members of the media and government officials. The 2010 edition featured articles on new research on self-exclusion, gender differences in treatment and recovery of problem gambling as well as on the role heredity plays in gambling disorders.



Ongoing Initiatives

EMERGE

Throughout 2010, the NCRG continued to offer and promote its Executive, Management & Employee Responsible Gaming Education (EMERGE) program. It is a ground-breaking science-based training program developed by scientists at Harvard Medical School. EMERGE is the only program of its kind grounded in scientific research that has been translated into an accessible training tool for gaming employees at all levels.

In 2010, the San Manuel Band of Mission Indians used EMERGE to teach its employees about the science behind gambling disorders and the importance of responsible gaming. Because of its web-based design, EMERGE is available to employees 24/7 and requires no special software or equipment. Employees can use the program and take certification tests at their own leisure.

Talking with Children about Gambling

"Talking with Children about Gambling" remained a valuable and sought-after resource in 2010. This brochure, first published in 2008, was developed by the NCRG in consultation with the Division on Addictions at Cambridge Health Alliance, a teaching affiliate of Harvard Medical School. "Talking with Children about Gambling" is geared to help parents, as well as others who work with youth, deter children from gambling and recognize possible warning signs of problem gambling and other risky behaviors.

Responsible Gaming Education Week (RGEW)

The 13th annual Responsible Gaming Education Week (RGEW) was held Aug. 2-6, 2010, during which the American Gaming Association (AGA) released a new brochure, "Taking the Mystery Out of the Machine: A Guide to Understanding Slot Machines," providing gaming employees and patrons with information about how slots are operated, developed and regulated. The brochure was widely distributed at casinos nationwide during RGEW and will be available at many properties year-round as part of casinos' standard responsible gaming resources. The NCRG worked with the AGA to help promote RGEW.



Guests visiting the casino floor at Hollywood Casino at Charles Town Races in Charles Town, W.Va. were greeted by posters urging them to "Take the Mystery Out of the Machine."

Media Outreach

The NCRG's many activities are often accompanied by a media outreach component to inform the public about the work of the Center and the progress being made on the research front and in other areas.

The NCRG distributed press releases and media alerts to more than 375 members of the media surrounding several key announcements, including: CollegeGambling.org, the NCRG annual Conference, the monograph series and research grants.

During the NCRG Road Tour, Phil Satre spoke to the City Club of Cleveland, and his speech was broadcast to more than 160 radio stations in 38 states.

In 2010, the NCRG also distributed two "In Case You Missed It" emails to its more than 350-person media list, drawing attention to the American Psychiatric Association (APA) release of proposed changes for *DSM-V* and NCRG-funded research studies on self-exclusion programs and a brief screening for pathological gamblers.



FUNDRAISING ACTIVITIES

Several major fundraising programs in 2010 netted significant contributions for the NCRG.

AGEM-AGA Golf Classic

The AGEM-AGA Golf Classic — co-sponsored by the Association of Gaming Equipment Manufacturers (AGEM) and the American Gaming Association (AGA), hosted by JCM Global (JCM), and held at Cascata in Boulder City, Nevada — raised more than \$100,000 for the organization. The event has raised nearly \$850,000 for the NCRG during its 12-year history.

The following companies generously supported the event:

Major Sponsors

Aristocrat Technologies
Caesars Entertainment Corporation
Konami Gaming, Inc.
MEI
Patriot Gaming & Electronics Inc.

Prize & Flag Sponsors

Absolute Exhibits
Gaming Laboratories International
Global Gaming Expo (G2E)
Hikam America, Inc.
KicTeam Inc. Waffletechnology
Southwest Print Source
Steinbeck Communications

Raffle Prize Sponsors

Corporate Concepts
Kirvin Doak Communications
Shuffle Master, Inc.

Team Sponsors

Aristocrat Technologies, Inc.
Aruze Gaming America, Inc.
Bally Technologies, Inc.
Boyd Gaming Corporation
Bright Group
Caesars Entertainment Corporation
Creative Games Technology, Inc.
Doty's Mini-Casino
Gaming Laboratories International

International Game Technology (IGT)
Konami Gaming, Inc.
Multimedia Games
Shuffle Master, Inc.
Sol Casinos
TransAct Technologies, Inc.

Single Sponsors

3M Touch Systems
Gaming Capital Group
Hikam America, Inc.
James Industries, Inc.



AGEM, AGA and JCM present check to the NCRG. Seated: Frank J. Fahrenkopf, Jr. (AGA). Standing (left to right): Judy Patterson (AGA), Aki Isoi (JCM), Glenn Christenson (NCRG), Tom Jingoli (AGEM), Marcus Prater (AGEM) and Tom Nieman (JCM).

2010 Gaming Hall of Fame Induction Ceremony

In 2010, the AGA posthumously inducted Timothy Parrot — an industry veteran who left his mark on a wide variety of gaming companies, including Boomtown, Inc.; Aristocrat Technologies, Inc. and Shuffle Master, Inc. — into the Gaming Hall of Fame. Held during Global Gaming Expo (G2E), the induction ceremony yielded \$51,000 for the NCRG from sponsorships of the event.

The following companies and individuals generously supported the event:

Gold Sponsors

Ameristar Casinos, Inc.
Aristocrat Technologies, Inc.
Bally Technologies, Inc.
Boyd Gaming Corporation
Caesars Entertainment Corporation
International Game Technology (IGT)

Isle of Capri Casinos, Inc.
MGM Resorts International
Pinnacle Entertainment, Inc.
PricewaterhouseCoopers, LLP
Shuffle Master, Inc.
South Point Hotel, Casino and Spa
Wynn Resorts, Limited

Silver Sponsors

Brownstein, Hyatt, Farber, Schreck, LLP
Konami Gaming, Inc.

Bronze Sponsor

Penn National Gaming, Inc.



Troy Parrott accepts the award commemorating his late father, Tim Parrott's, induction into the Gaming Hall of Fame from AGA Chairman Keith Smith of Boyd Gaming Corporation (left) and AGA President and CEO Frank Fahrenkopf (right).

Additional Programs

In addition, G2E donated \$72,000 to the NCRG through its annual giving campaign. Those funds represented a portion of G2E registration fees, as well as donations from exhibitors.

A LOOK TO THE FUTURE

The previous pages tell a story of success and progress for the NCRG. What's ahead as we work into 2011?

The NCRG has had great success with its ongoing initiatives and will continue to implement these in 2011, including holding the fifth annual NCRG Road Tour this summer, publishing the sixth volume of its monograph series, and working with the AGA to publish *Responsible Gaming Quarterly* and promote Responsible Gaming Education Week. The NCRG will also partner with a national organization to broaden the distribution of its resources on youth gambling.

In March 2011, the NCRG launched CollegeGambling.org, the first-of-its-kind website we began developing in early 2010. It will provide a substantive and versatile store of information to help schools and their students address issues surrounding gambling in the way that best fits the individual needs of each school.

There will also be some exciting additions and changes to the NCRG's initiatives in 2011. Beginning this year, we are shifting the date and location for the conference to Oct. 2-4 at the Sands Expo and Convention Center so the event remains aligned with G2E, thereby continuing our tradition of providing information about gambling disorders to a wide audience.

We will enhance the advances made last year in the NCRG's public education and outreach programs. In addition to hosting an increased number of sessions of its popular webinar series, the NCRG has engaged in partnership with NAADAC, the Association for Addiction Professionals, to sponsor a webinar that provides addiction professionals with the information they need to know about gambling disorders.

2011 promises to be a significant year for the NCRG as we build on the productive changes made to our grants program that will allow us to better fulfill our mission of leadership in the field of research. We have already announced the allocation of more than \$700,000 — nearly twice the amount funded in 2010 — for grants in support of research on the prevention and treatment of gambling disorders.

Following on the success of such workshops during the annual Road Tour, the NCRG will hold several workshops for problem gambling treatment providers in different cities across the U.S. The NCRG also will host two workshops to promote the grants program to interested researchers.

Finally, you will be seeing some changes to the structure of our organization. We will merge the work of the Institute for Research on Gambling Disorders, charged with managing and administering a competitive research grants program, and conducting public awareness and education about gambling disorders, with the work of the NCRG. This will eliminate confusion about the roles of the Institute and the NCRG and will allow for all NCRG-related initiatives to be executed under a single organization. The NCRG research grants program will continue to rely on the guidance of its Scientific Advisory Board and will mandate stringent firewalls to separate the gaming industry's contributions from the research it funds.

The NCRG is also proud announce the hiring of a communications and outreach manager who will help to enhance our capabilities. This full-time employee will be conducting stakeholder outreach and developing programs to enhance the NCRG's relationships with key groups, including state problem gambling councils, higher education institutions and others. The communications and outreach manager will also help to increase our traditional and social media presence, and oversee our speakers bureau program, working to place NCRG representatives and key researchers in speaking opportunities (both NCRG and non-NCRG sponsored) across the country.

If the past is prologue, the NCRG is in good shape for the future. We continue building on our success and progress year-to-year. 2011 will see even greater strides in fulfilling our mission to help individuals and families affected by gambling disorders by supporting the finest peer-reviewed, scientific research into pathological and youth gambling; encouraging the application of new research findings to improve prevention, diagnostic, intervention and treatment strategies; and advancing public education about gambling disorders and responsible gaming.



NATIONAL CENTER FOR RESPONSIBLE GAMING

www.ncrg.org

1299 PENNSYLVANIA AVENUE, NW
SUITE 1175
WASHINGTON, DC 20004

900 CUMMINGS CENTER
SUITE 418-U
BEVERLY, MA 01915