



Executive, Management, & Employee  
Responsible Gaming Education Program

Increasing numbers of gaming jurisdictions are requiring operators to educate their employees about gambling disorders and responsible gaming. The National Center for Responsible Gaming (NCRG), the affiliated charity of the American Gaming Association, offers a

program that will meet your current and future training needs. *EMERGE* is the only such training to offer:

- Content that exceeds gaming regulations requiring the education of employees about problem gambling
- A course designed by Harvard Medical School faculty
- State-of-the-art online learning available to your employees 24/7
- A program customized for your policies and the regulations under which you operate
- Content approved by an international, third-party credentialing agency

Experience the program yourself by viewing the demo at [www.emerge-training.org](http://www.emerge-training.org).

## TRAINING CONTENT

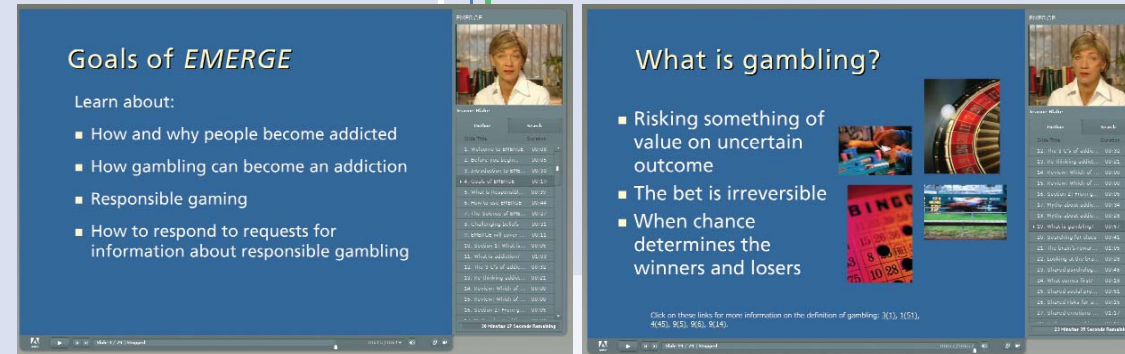
*EMERGE* exceeds the requirements of current gaming regulations regarding training of employees by offering a comprehensive introduction to addiction, how gambling can become an addiction, the nature and prevalence of gambling disorders and responsible gaming. The program is based on the most recent, published scientific research, not outdated notions about addiction and gambling disorders.

*EMERGE* was developed for the broadest possible audience. The text on the slides and the vocal narration are appropriate for a sixth- to eighth-grade reading level, as measured by the Flesch-Kincaid Readability Test.

## CUTTING-EDGE TECHNOLOGY

*EMERGE* is a media-rich e-learning program accessible to anyone with a computer and a high speed Internet connection. Photos, graphics, audio and video accompany the text to make the training an engaging learning experience for your employees. Adobe® Acrobat® Connect™, one of the most popular Web-based learning platforms, provides easy access. Once online, all the user needs is a password to access the *EMERGE* training site. **No special software or equipment is needed.**

Employees can take the self-paced course at home or work, 24 hours a day, seven days a week. Testing with casino employees in Nevada and Iowa indicated that the average user needs 45-60 minutes to complete the training and take the quiz.



## CUSTOMIZATION

The *EMERGE* staff consults with the participating company to ensure that the training reflects the company's responsible gaming policies and practices as well as the relevant gaming regulations pertaining to problem gambling. *EMERGE* can be customized to fit the needs of any type of company or organization including casinos, tribal governments, lotteries, racetracks and regulatory bodies.

## THE DEVELOPERS

*EMERGE* is the product of Harvard Medical School faculty, led by Dr. Howard Shaffer, the director of the Division on Addictions at Cambridge Health Alliance and one of the foremost researchers on gambling addiction. The program is professionally narrated by television medical reporter Jeanne Blake.

## ACCOUNTABILITY

Employees who participate in the training must pass a quiz by answering correctly at least 70 percent of the questions. Our Web-based learning application automatically tracks participation and test results. Employees who pass the course will receive certificates of completion indicating the approval of the course content by the American Academy of Health Care Providers in the Addictive Disorders, an international agency that promotes the highest standard of education in the addictions.

## Who's most vulnerable?

- Men or Women?
- Young people



Click on the following links for more information about gender differences, vulnerable populations, and gambling problems: 6(34), 6(38), 6(42), 7(33), 5(50), 7(12), 9(34), 10(5).  
Images: Original work the property of the University of Nevada-Las Vegas, Las Vegas, Nevada.  
© University of Nevada-Las Vegas 2006

## SUBSCRIPTION

An annual subscription to *EMERGE* covers:

- 24/7 access to the training
- A fully customized training that reflects the company's responsible gaming policies and procedures
- A password-protected, customized section of the *EMERGE* Web site available only to company employees
- Automatic tracking of employee participation that requires no additional staffing

For more information on subscriptions and pricing, contact Christine Reilly, executive director of the Institute for Research on Pathological Gambling and Related Disorders, Division on Addictions, 101 Station Landing, Suite 2100, Medford, MA 02155 (781.306.8604; [cjreilly@challiance.org](mailto:cjreilly@challiance.org)) or visit [www.ncrg.org](http://www.ncrg.org).

## SPONSORS

*EMERGE* is a joint project of the NCRG and the Institute for Research on Pathological Gambling and Related Disorders, a program of the Division on Addictions, Cambridge Health Alliance, a teaching affiliate of Harvard Medical School. The new research reflected in the training was supported by the NCRG, founded in 1996 to help individuals and families affected by gambling disorders through support of the highest quality research and public education. The NCRG receives funding from the major commercial casino companies in the U.S. and other businesses related to gaming. (Visit [www.ncrg.org](http://www.ncrg.org) for more information.) Research funding is distributed through the Institute, first established in 2000 at Harvard Medical School.

# A SOLUTION TO YOUR TRAINING NEEDS

# EMERGE

Executive, Management and  
Employee Responsible Gaming Education



Cambridge Health Alliance



HARVARD  
MEDICAL SCHOOL  
TEACHING AFFILIATE



NATIONAL CENTER FOR RESPONSIBLE GAMING

Institute for Research on Pathological  
Gambling and Related Disorders  
Division on Addictions,  
Cambridge Health Alliance  
and Harvard Medical School  
101 Station Landing, Suite 2100  
Medford, MA 02155  
781.306.8600  
[www.divisiononaddictions.org/institute](http://www.divisiononaddictions.org/institute)

1299 Pennsylvania Ave., NW  
Suite 1175  
Washington, DC 20004  
202.552.2686  
[www.ncrg.org](http://www.ncrg.org)